



## **PNEUMATIC ROTARY ACTUATORS**

Installation and Maintenance Instructions

### **TABLE OF CONTENTS**

1. GENERAL INFORMATION
2. SAFETY AND WARNINGS
3. WORKING PRINCIPLE
4. OPERATING AND STORAGE CONDITIONS
5. INSTALLATION
6. MAINTENANCE
7. TROUBLESHOOTING
8. GUARANTEE

**! MAKE SURE YOU READ THIS GUIDE FULLY, BEFORE USING THE ACTUATOR**

**! STORE THIS GUIDE SAFELY SO THAT YOU CAN USE IT IN THE FUTURE**

EGMO Ltd.

Tel: +972(0)4.9855.171/176

E-Mail: [salese@egmo.co.il](mailto:salese@egmo.co.il)

Fax: +972(0).4.9855.175

[www.egmo.co.il](http://www.egmo.co.il)

© 2013 by EGMO Ltd.

All rights reserved. No part of this document may be reproduced or transmitted in any form or by any means, electronic, mechanical, photocopying, recording, or otherwise, without prior written permission of EGMO Ltd.

## **1. GENERAL INFORMATION**

The following document contains information on how to install, operate and perform maintenance of TWISTMax pneumatic actuators. Product users and maintenance personnel should thoroughly review this document along with installation, operation and maintenance instructions of any valve that actuated by TWISTMax pneumatic actuator.

## **2. SAFETY AND WARNINGS**

Serious injuries or death can be caused or property can be damaged due to improper usage of this product. Users and maintenance personnel must read this document before using this product and strictly adhere it at all times. For additional information contact EGMO.

**2.1** The system designer and user have the sole responsibility for selecting products suited to their application requirements and ensuring the proper installation, operation and maintenance of the product. Please consider application details, material compatibility and product ratings when making your selection. Improper selection or use of products can cause serious injuries, death or property damage.

**2.2** Product users and maintenance personnel must have deep understanding of any national and/or local safety laws and regulations.

**2.3** The product must be used only at operating conditions as specified by EGMO and as it stated on product nameplate.

**2.4** The product does not require maintenance of internal components. **DO NOT DISASSEMBLE THE PRODUCT. THE PRODUCT HAS PRELOADED SPRING INSIDE.**

**2.5** Before performing any installation or maintenance works insure that all pressure or electrical sources are not connected to product.

**2.6** Before performing any installation or maintenance works including valve actuation insure that you deeply understand system's (pipeline's) operating logic and specific valve's role in system.

**2.7** Before servicing any installed valve you must depressurize and drain the system.

**2.8** Before servicing any installed valve you must cycle it.

**2.9** Note that residual material may be left in the valve and system.

**2.10** Do not rotate manually an actuator's shaft.

**2.11** Do not leave any grip key or shaft connection attached to the actuator during functional testing.

**2.12** Keep hands, hair and clothing away from moving parts while actuating the actuator.

**2.13** Only trained and qualified users, who have read this document, are allowed to install, operate and perform maintenance of this product.

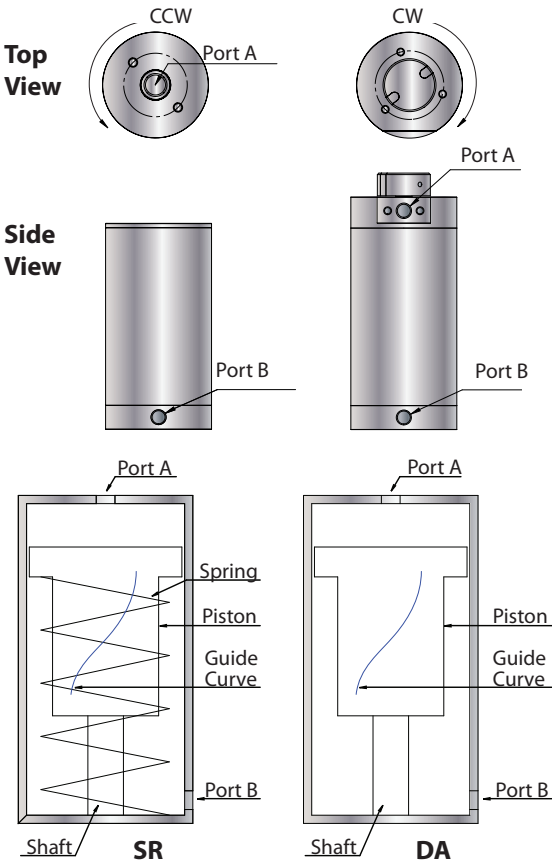
**2.14** EGMO does not bear responsibility for accessories, attached to the actuator, which were not provided by EGMO.

**2.15** It is allowed to actuate the actuator only with medium which designated by EGMO. For additional information contact EGMO. **DO NOT ACTUATE THE ACTUATOR WITH OXYGEN AND HYDROGEN.**

### 3. WORKING PRINCIPLE

**3.1 DA - Double Acting Actuator:** Air supplied through Port A forces the piston and moves it downwards. Shaft forced by spiral guide rotates in CCW direction. Air supplied through Port B forces the piston and moves it upwards. Shaft forced by spiral guide rotates in CW direction.

**3.2 SR - Spring Return Actuator:** Air supplied through Port A forces the piston, moves it downwards, and compresses the spring. Shaft forced by spiral guide rotates in CCW direction. Upon release of air pressure, the spring forces the piston upwards. Shaft forced by spiral guide rotates in CW directions.



## 4. OPERATING AND STORAGE CONDITIONS

### 4.1 Technical data:

Housing material *	AISI 304
Internal components material *	AISI 304
Spring material	Music wire (coated)
Piston material	Engineering plastic
Seal material *	NBR
Operating temperature *	-10°C to +60°C
SR Operating pressure	5 - 8 bar
DA Operating pressure	4 - 8 bar
Rotation	90°±5°
Torques	See catalogue
Operating media *	Compressed air (dry and filtered)
Pneumatic interface	Metric, Imperial
Connection interface	DIN3337 and ISO5211
Control devices interface	VDI/VDE 3845
Control medium	Filtered air according to DIN ISO 8573-1/class 4
Control medium filtration	30 micron (or less)
Usage	Indoor / Outdoor / Corrosive environment

*\*For other options contact EGMO*

### 4.2 Storage:

**4.2.1** Store the actuators inside their original package.

**4.2.2** Store the actuators indoors, in dry and clean place.

**4.2.3** It is recommended to cycle the actuators during long period storage.

### 4.3 Unpacking:

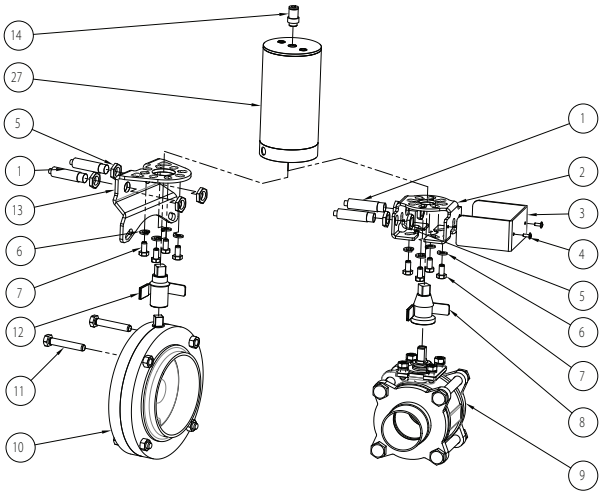
**4.3.1** Before unpacking the actuator, insure that product received comply with packing list.

**4.3.2** Inspect the actuator to any damages (contact your shipper if damages found).

**4.3.3** Remove protection plugs close as possible to installation.

## 5. INSTALLATION

### Basic



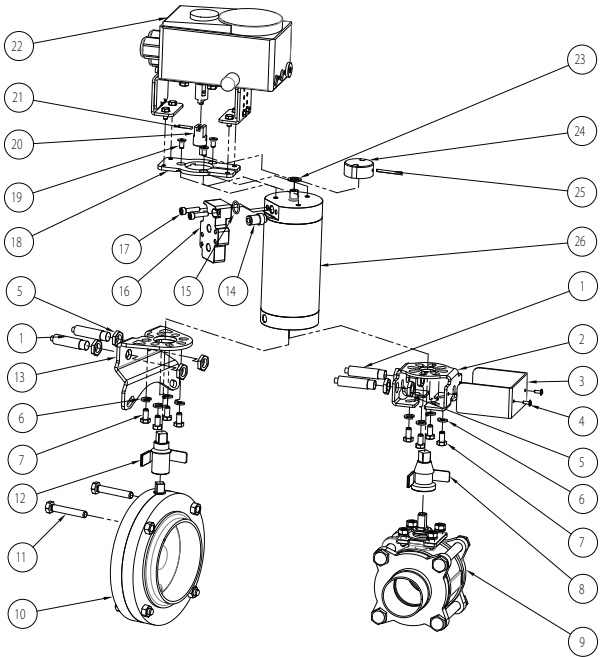
NO.	DESCRIPTION	QT'Y	MATERIAL
1	Proximity Switch sensor	2	N/A
2	Universal bracket for ball valve	1	SS304
3	Bracket safety cover	1	PC
4	Button Head Cap Screw	2	SS304
5	Nut M12	4	SS304
6	Spring washer*	4	SS304
7	HEX Head bolt*	4	SS304
8	Coupling for ball valve (for inductive sensors)	1	SS304
9	Ball valve	1	STD
10	Butterfly valve	1	STD
11	Valve tightening bolt **	2	SS304
12	Coupling for butterfly valve (for inductive sensors)	1	SS304
13	Bracket for butterfly valve	1	SS304
14	Air connection	1	STD
15	O-Ring # 2-009/ 2-014***	1	STD

\* See size in catalogue.

\*\* According to valve size (defined by valve manufacturer)

\*\*\* See 5.2.1.5

## Advanced



NO.	DESCRIPTION	QT'Y	MATERIAL
16	NAMUR Pad adapter	1	Aluminum, Aluminum, hard anodized
17	Socket head screw M5x20	2	SS304
18	VDI/VDE 3845 Plate	1	SS304
19	Flat head socket M5x10	2	SS304
20	VDI/VDE 3845 Adapter	1	SS304
21	Spiral pin 3mm x 16mm	1	SS304
22	Control unit	1	N/A
23	Sliding washer	1	PTFE
24	Upper visual position indicator	1	Plastic
25	Spiral pin 3mm x 32mm	1	SS304
26	Twistmax Advanced quarter turn pneumatic actuator	1	N/A
27	Twistmax Basic quarter turn pneumatic actuator	1	N/A

\* See size in catalogue.

\*\* According to valve size (defined by valve manufacturer)

## **5.1 Actuator installation :**

**5.1.1** Prior to installation make sure that there is enough space for installation / removal and connection of actuator ②⑥, ②⑦.

**5.1.2** When SR actuator ②⑥, ②⑦ used it is recommended to mount filter on Port B in order to avoid particles entrance into the actuator.

**5.1.3** When SR actuator ②⑥, ②⑦ used in system that being washed periodically by water (or any other fluid) it is recommend to mount elbow faced downwards on Port B in order to prevent water (or any other fluid) entrance into the actuator.

**5.1.4** Actuator ②⑥, ②⑦ and valve ⑨, ⑩ must be properly aligned. Failure to do so may lead to valve malfunction or medium leak.

**5.1.5** After the installation check visually alignment of coupling ⑧, ⑫ and actuator ②⑥, ②⑦.

**5.1.6** DO NOT BLOCK Port B at all times. The actuator ②⑥, ②⑦ will stop if port B is blocked.

**5.1.7** It is recommended to connect the actuator ②⑥, ②⑦ to the bracket ②, ⑬ first and only then to connect the bracket ②, ⑬ to the valve ⑨, ⑩.

**5.1.8** After final tightening of installation bolts ⑦, ⑪ on valve ⑨, ⑩ and actuator ②⑥, ②⑦ check that the coupling ⑧, ⑫ has small axial movement. WHEN PERFORMING THIS OPERATION INSURE THAT THE ACTUATOR ②⑥, ②⑦ IS NOT CONNECTED TO PRESSURE SUPPLY.

**5.1.9** After the installation insure proper tightening of all bolts.

**5.1.10** Prior to installation verify correct valve's ⑨, ⑩ position (NO – Normally Opened or NC – Normally Closed) according to system design and rotate valve's ⑨, ⑩ stem accordingly.

**5.1.11** Insure valve's ⑨, ⑩ body tightening torque according to valve's manufacturer instructions.

**5.1.12** TWISTMax actuator ②⑥, ②⑦ can be mounted at any orientation.

**5.1.13** For actuator ②⑥, ②⑦ installation use suitable, fault free accessories and tools.

**5.1.14** Apply lubricant on threads in order to prevent galling.

**5.1.15** After the installation use soap solution to make sure all air connections ⑭, ⑯ are leak free.

**5.1.16** It is recommended to mount on TMX4 Advanced actuator ②⑥, ②⑦ air connection ⑭ with ø10mm (ø3/8") outside diameter.

**5.1.17** Note that TMX4 actuator's ②⑥, ②⑦ connection interface is not according to ISO5211. For more details see catalogue.

**5.2** Accessories installation (applicable only for advanced type):

**5.2.1** NAMUR Pad ①⑥.

**5.2.1.1** Apply grease on o-ring ①⑤.

**5.2.1.2** Install supplied o-ring ①⑤.

**5.2.1.3** Tighten installation bolts ①⑦.

**5.2.1.4** Use soap solution to insure that the installation is leak free.

**5.2.1.5** O-Rings ①⑤ sizes:

NAMUR Pad for	O-Ring #	Mat'l
TMX-4	2-009	NBR
TMX-5 and up	2-014	NBR

**5.2.2** VDI/VDE 3845 AA1 Plate ①⑧ and VDI/VDE 3845 Adapter ②⑩:

**5.2.2.1** Remove spiral pin 3mm x 32mm ②⑤ (hole diameter  $\varnothing$ 3mm / 0.12").

**5.2.2.2** Remove upper visual position indicator ②④.

**5.2.2.3** Install sliding washer ②③.

**5.2.2.4** Install VDI/VDE 3845 Adapter ②⑩ and insure that alignment of holes in actuator's ②⑥ shaft and VDI/VDE 3845 Adapter ②⑩.

**5.2.2.5** Insert spiral pin 3mm x 16mm ②①.

**5.2.2.6** Install VDI/VDE 3845 Plate ①⑧ and tighten flat head socket screws ①⑨.

**5.2.3** Mounting bracket ②, ①③ and travel adjustment (hard stop) of actuator ②⑥, ②⑦ and valve ⑨, ⑩:

Mounting bracket ②, ①③ has slots on its connection surfaces in order to allow performance of actuator's ②⑥, ②⑦ travel adjustment.

## 6. MAINTENANCE

TWISTMax actuator does not require maintenance of internal components. It is recommended to perform steps as follows every six months in order to insure actuator's proper operation.

**WARNING: To avoid serious injuries, death or property damage the following steps should be performed when pressure supply is disconnected.**

**6.1** Observe the actuator for correct fail-safe action.

**6.2** Examine the actuator for damage caused by corrosive fumes and process drippings.

**6.3** If possible, stroke the actuator and check for a smooth, full-stroke operation.

**WARNING: To avoid serious injuries, death or property damage, keep hands, hair and clothing away from all moving parts while operating the actuator. If the actuator failed during testing, do not disassemble it. Contact EGMO customer service. Disassembling the actuator is a dangerous operation.**

**DO NOT DISSEMBLE THE ACTUATOR IN ANY CASE!**

**6.4** Make sure the positioner mounting bolts, linkage and stem clamp are fastened securely.

**6.5** Ensure all accessories, brackets and associated bolting is fastened securely.

**6.6** Clean any dirt or foreign material from actuator's surfaces.

**6.7** If an air filter is mounted, isolate the air filter, then check and clean or replace the element if necessary.

**7. TROUBLESHOOTING**

PROBLEM	PROBABLE CAUSE	CORRECTIVE ACTION
Pressure supplied to actuator but it does not move.	<ol style="list-style-type: none"><li>1. Leaks in pressure supply system.</li><li>2. Incorrect pressure supply system design.</li><li>3. Supply pressure (to actuator) too low.</li><li>4. Malfunctioning control device.</li><li>5. Actuator internal components failure.</li><li>6. Valve's body bolts are over tightened</li><li>7. Incorrect installation.</li><li>8. Port B blocked.</li></ol>	<ol style="list-style-type: none"><li>1. Check pressure supply system for leaks.</li><li>2. Check pressure supply system design.</li><li>3. Check supplied pressure (to actuator).</li><li>4. Check control device.</li><li>5. Replace actuator.</li><li>6. Tight valve's body bolts according to manufacturer instructions.</li><li>7. Refer to installation procedure as described in this document.</li><li>8. Unblock port B.</li></ol>
Pressure supplied, actuator and valve are operating but process is incorrect (when connected to 3 way ball valve).	<ol style="list-style-type: none"><li>1. Incorrect ball position during installation</li></ol>	<ol style="list-style-type: none"><li>1. Verify correct ball position according to process.</li></ol>

PROBLEM	PROBABLE CAUSE	CORRECTIVE ACTION
Excessive leakage through valve's seat.	1. Improper travel adjustment. 2. Valve malfunctioning.	1. Perform travel adjustment. 2. Replace or fix valve.
Valve does not operate when actuator operate	1. Valve malfunctioning.	1. Replace or fix valve.
Jerky coupling rotation	1. Pressure supply system malfunction. 2. Incorrect installation. 3. Valve malfunctioning. 4. Actuator malfunctioning.	1. Check pressure supply system. 2. Refer to installation procedure as described in this document. 3. Replace or fix valve. 4. Replace actuator.

## 8. GUARANTEE


Our liability, with respect of any defect or failure of the goods supplied or for any loss, injury or damage attributable onward is limited to the replacement or repair of the defects which under proper use appear therein and arise solely from faulty materials and workmanship. This guarantee is for a period of 12 calendar months after the original goods were first shipped. No other warranty is either expressed or implied.

### EU MACHINERY DIRECTIVE - DECLARATION OF CONFORMITY – ACTUATORS:

The rotary pneumatic actuator range manufactured by EGMO, together with add-on units (Limit switches, positioners, solenoid valves, etc), all described in sales catalogue, conform to the requirements of the Machinery Directive 2006/42/EC, and to the essential health and safety requirements imposed by this directive.

Name: Ronen Cohen

Position: Q.A. Manager

Signature:  **RONEN COHEN**  
Q.A. MANAGER

 **EGMO**  
NEUMO Ehrenberg Group

Although EGMO Ltd. can provide general guidelines, it cannot provide specific data and warnings for all possible applications. The purchaser/user must therefore assume the ultimate responsibility for the proper sizing and selection, installation, operation, and maintenance of EGMO Ltd. products. The purchaser/user should read and understand the Installation Operation Maintenance (IOM) instructions included with the product, and train its employees and contractors in the safe use of EGMO Ltd. products in connection with the specific application. While the information and specifications contained in this literature are believed to be accurate, they are supplied for informative purposes only and should not be considered certified or as a guarantee of satisfactory results by reliance thereon. Nothing contained herein is to be construed as a warranty or guarantee, express or implied, regarding any matter with respect to this product. EGMO Ltd. is continually improving and upgrading its product design, Therefore the specifications, dimensions and information contained herein are subject to change without notice. Should any question arise concerning these provisions, the purchaser/user should contact EGMO Corporation at any one of its worldwide operations or offices. For more information about EGMO Ltd. Corporation, contact [www.egmo.co.il](http://www.egmo.co.il)